

4

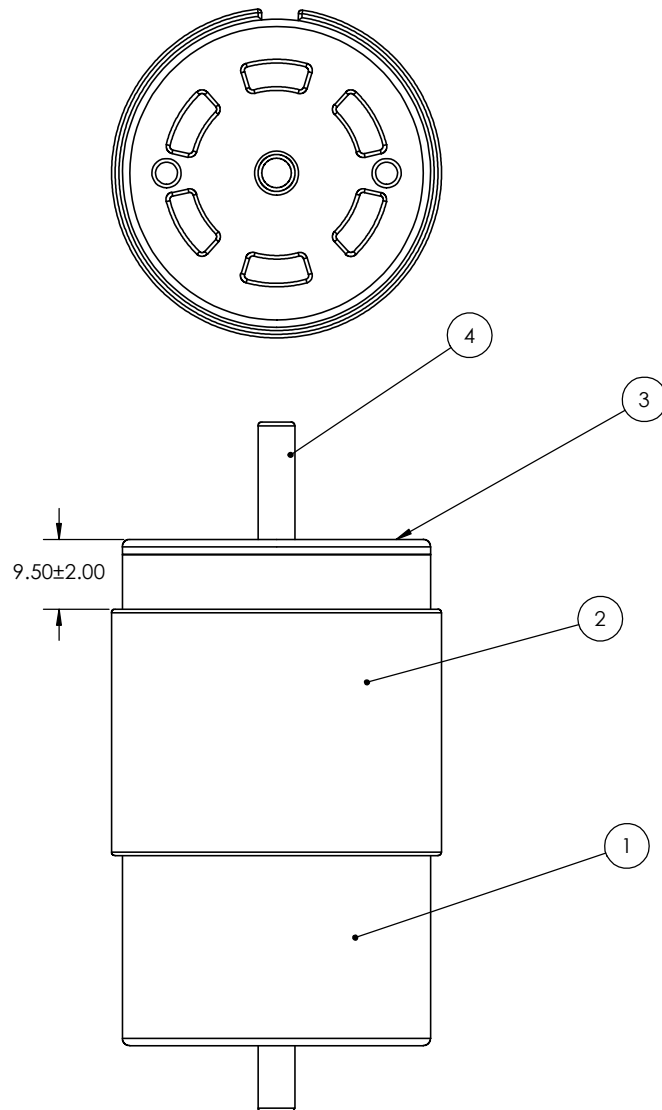
3

2

1

ITEM NO.	PART NUMBER	DESCRIPTION	QTY.
1	Motor Housing	Main motor housing (inner case)	1
2	Outer Shell	Outer motor sleeve (press-fit)	1
3	Housing Cap		1
4	Shaft		1

NOTE: Housing, Housing Cap and outer shell are press-fit assembled. Ensure interference fit per part dimensions.



DRAWN BY: Mikiyas Haile

TITLE:

Motor Case

PROPRIETARY AND CONFIDENTIAL

This drawing and the information contained herein were created solely for educational purposes as part of SAIT MFG coursework. The geometry is based on a reverse-engineered sample component; the original manufacturer is unknown. This document does not represent official specifications of any commercial product.

SIZE	DWG. NO.	REV
B	1	1
SCALE: 1.5:1		SHEET 1 OF 3

4

3

2

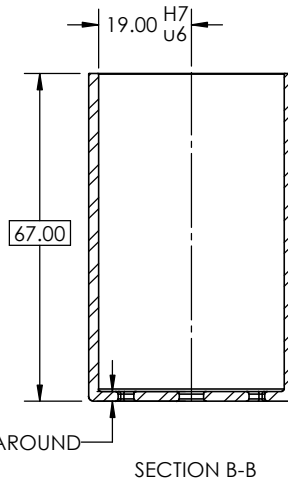
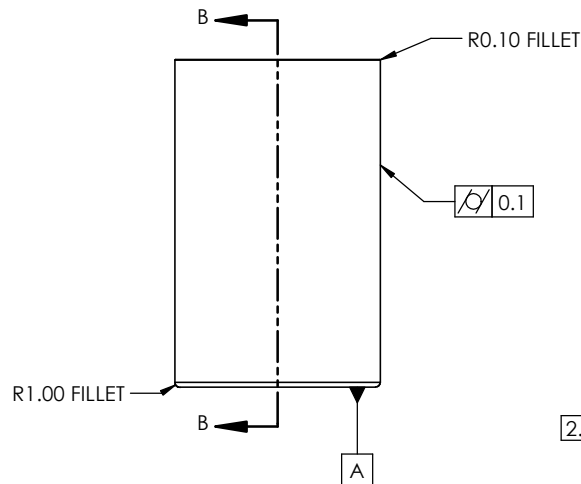
1

4

3

2

1

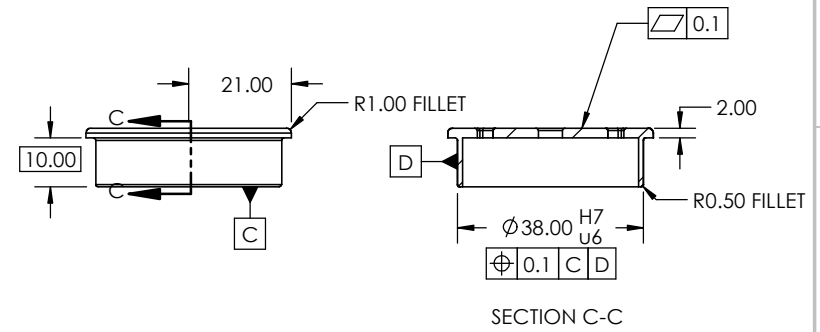
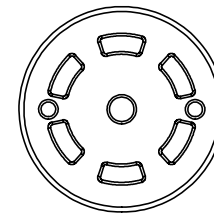


Motor Housing

Manufacturing Process:

Deep Drawing, Progressive Die Stamping + Piercing,
CNC Machining

NOTE: The bottom face of Part A (Housing) and the top face of Part B (Cap) are identical features. All dimensions and GD&T specified for this face apply equally to both parts.



Motor Housing Cap

MATERIAL:
Galvanized Steel

DRAWN BY: Mikiyas Haile

DIMENSIONS ARE IN MMS.
INTERPRET GEOMETRIC
TOLERANCING AS PER: Y14.5

TITLE:

Motor Housing

UNLESS OTHERWISE SPECIFIED:

LINEAR: ± 0.10
ANGLES: $\pm 1^\circ$

SIZE DWG. NO.

B

1

REV

3

SCALE: 1:4

SHEET 2 OF 3

PROPRIETARY AND CONFIDENTIAL

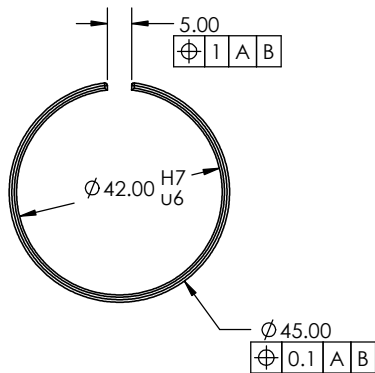
This drawing and the information contained herein were created solely for educational purposes as part of SAIT MFG coursework. The geometry is based on a reverse-engineered sample component; the original manufacturer is unknown. This document does not represent official specifications of any commercial product.

4

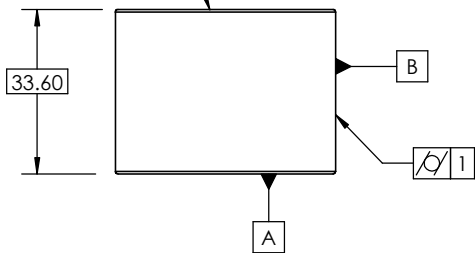
3

2

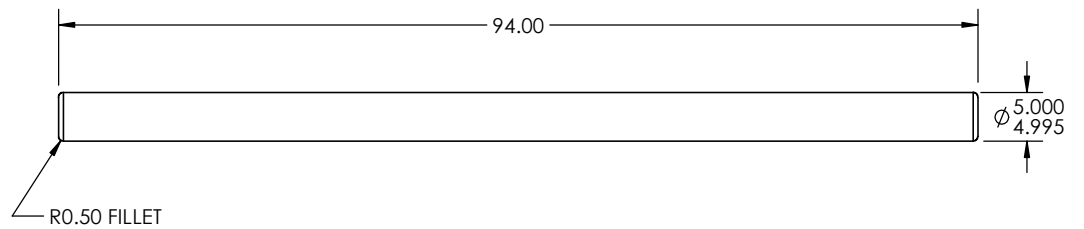
1



2X R0.50 FILLET



Outer Shell
Material: Galvanized Steel



Shaft
Material: High-Carbon Steel
Manufacturing Process:
Lathe Machining

PROPRIETARY AND CONFIDENTIAL

This drawing and the information contained herein were created solely for educational purposes as part of SAIT MNFG coursework. The geometry is based on a reverse-engineered sample component; the original manufacturer is unknown. This document does not represent official specifications of any commercial product.

MATERIAL:
SPECIFIED IN NOTES

DIMENSIONS ARE IN MMS.
INTERPRET GEOMETRIC
TOLERANCING AS PER: Y14.5

UNLESS OTHERWISE SPECIFIED:
LINEAR: ± 0.10
ANGLES: $\pm 1^\circ$

DRAWN BY: Mikiyas Haile

TITLE:

Outer Shell & Shaft

SIZE	DWG. NO.	REV
B	1	1
SCALE: 1.5:1		SHEET 3 OF 3

4

3

2

1